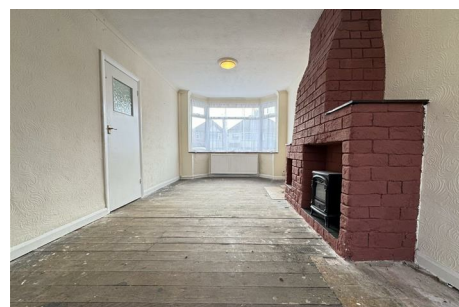
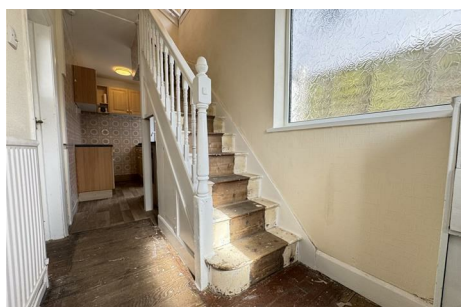


Derrydown Road, Perry Barr, B42 1RX

Offers In Excess Of £210,000



- SEMI DETACHED FAMILY HOME
- FITTED KITCHEN
- LARGE DOUBLE GARAGE/WORKSHOP TO REAR WITH ELECTRIC SHUTTER DOORS
- NO UPWARD CHAIN
- THREE BEDROOMS
- FAMILY BATHROOM
- POTENTIAL TO EXTEND (STPP)
- SPACIOUS THROUGH LOUNGE / DINER
- OFF ROAD PARKING TO FRONT
- IDEAL FIRST TIME BUY

Contact us for more details:
Tel: 0121 358 6222 Email: greatbarr@acres.co.uk

Full listings online at www.acres.co.uk